

Hardware and software available for the Precision Mix II

AutoLog 2005-----1,320.00
site license per software package

Each Graco Platform (Example: Precision Mix II) requires a software package and allows connections to all like devices in one building.

Note: Precision Mix II must contain a network card and be configured with a network card.

AutoLog PLC Software-----\$3,995.00
Software required to directly communicate from an Allen Bradley programmable controller to Precision Mix II.

Note: In addition to AutoLog PLC software, an Allen Bradley KTX card and a full copy of RS Link software is required.

AutoReport 2005 Software----- \$1500.00
AutoReport 2005 Software is a Microsoft Excel driven macro program that automatically converts data recorded by the AutoLog program and generates specific usage totals based on user definable set up parameters.

All calculations are performed in a Microsoft Excel spreadsheet.

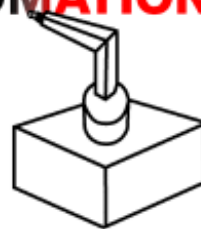
Supports Microsoft Windows 95, 98, NT, XP & 2000

Windows is a registered trademark of Microsoft.



**AUTOQUIP
AUTOMATION**

Autoquip, Inc.
N57 W13430 Reichert Avenue
Menomonee Falls, WI 53051
Phone: (262) 781-6133
Fax: (262) 781-6188



email: autoquip@mixcom.com

web site: www.aqautomation.com

AUTOQUIP AUTOMATION COPYRIGHT © 2005

AUTOLOG - 2005

Precision Mix Data Recording Software



AUTOLOG - 2005 Precision Mix Data Recording Software

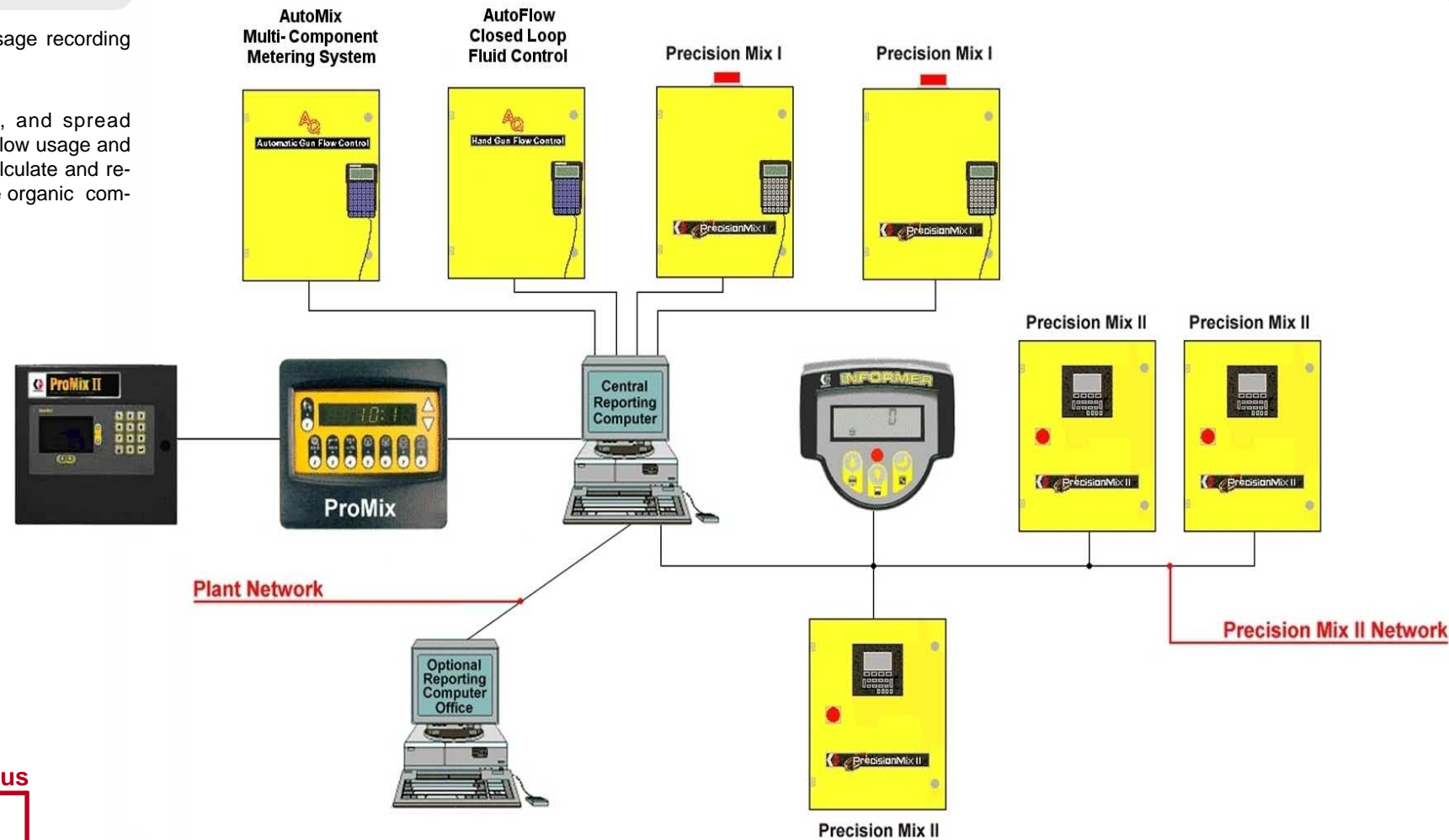
V.O.C. Overview

Single and dual component paint usage recording and V.O.C. generating software.

Windows based communications, and spreadsheet, and database used to record flow usage and used to flow usage information to calculate and report sub components such as volatile organic compounds, V.O.C.'s.

Key Benefits:

- Automated method of collecting and reporting solvent emissions.
- Much more accurate.



AutoReport 2005 VOC Tabulator

AutoReport software uses the data acquired by the **AutoLog software** package and information entered into a spreadsheet program to generate full featured environmental reports. **AutoReport** is designed to sub-divide by chemical composition each gallon of paint and hardener into **V.O.C.** and non **V.O.C.** usage totals. **AutoReport** can be programmed to provide sub and grand totals for all **V.O.C.** producing liquids passing through the **Precision Mix** along with non- **V.O.C.'s** totals and subtotals by color, and material type.

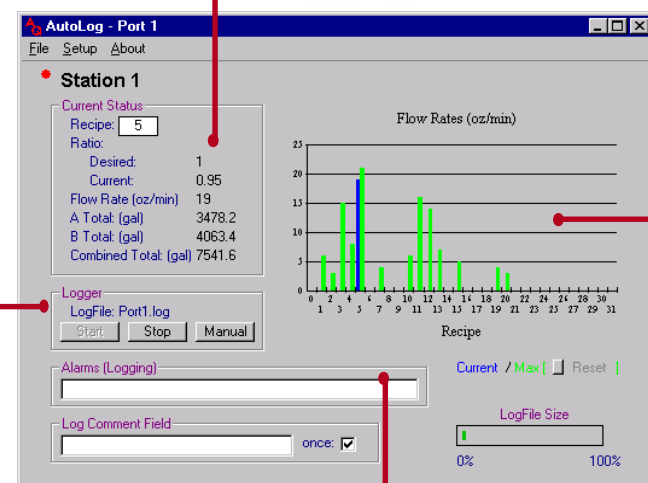
FLUID DISPENSED BY RECIPE			
Recipe	Color	Component	Total
NOT DEFINED	NOT DEFINED	A	0.00
NOT DEFINED	NOT DEFINED	B	0.00
IN USE	URETHANE		11141.00
RED	ACRYLIC		31388.00
ORANGE	ENAMEL		14870.00
NOT DEFINED	NOT DEFINED		0.00

RECIPE BREAKDOWN			
RECIPE	COATING DISPE	COATING DISPE	TOTAL COATING
RECIPE 1	0.00	0.00	0.00
RECIPE 2	0.00	0.00	0.00
RECIPE 3	0.00	0.00	0.00
RECIPE 4	0.00	0.00	0.00
RECIPE 5	0.00	0.00	0.00
RECIPE 6	0.00	0.00	0.00
RECIPE 7	0.00	0.00	0.00
RECIPE 8	0.00	0.00	0.00
RECIPE 9	0.00	0.00	0.00
RECIPE 10	0.00	0.00	0.00
RECIPE 11	0.00	0.00	0.00
RECIPE 12	0.00	0.00	0.00
RECIPE 13	0.00	0.00	0.00
RECIPE 14	0.00	0.00	0.00
RECIPE 15	0.00	0.00	0.00
RECIPE 16	0.00	0.00	0.00
RECIPE 17	0.00	0.00	0.00
RECIPE 18	0.00	0.00	0.00
RECIPE 19	0.00	0.00	0.00
RECIPE 20	0.00	0.00	0.00
RECIPE 21	0.00	0.00	0.00
RECIPE 22	0.00	0.00	0.00
RECIPE 23	0.00	0.00	0.00
RECIPE 24	0.00	0.00	0.00
RECIPE 25	0.00	0.00	0.00
RECIPE 26	0.00	0.00	0.00
RECIPE 27	0.00	0.00	0.00
RECIPE 28	0.00	0.00	0.00
RECIPE 29	0.00	0.00	0.00
RECIPE 30	0.00	0.00	0.00
RECIPE 31	0.00	0.00	0.00
TOTAL			3785

VOC TOTALS BY RECIPE			
RECIPE NUMBER	NOT DEFINED	NOT DEFINED	NOT DEFINED
RECIPE 1	0.00	0.00	0.00
RECIPE 2	0.00	0.00	0.00
RECIPE 3	0.00	0.00	0.00
RECIPE 4	0.00	0.00	0.00
RECIPE 5	0.00	0.00	0.00
RECIPE 6	0.00	0.00	0.00
RECIPE 7	0.00	0.00	0.00
RECIPE 8	0.00	0.00	0.00
RECIPE 9	0.00	0.00	0.00
RECIPE 10	0.00	0.00	0.00
RECIPE 11	0.00	0.00	0.00
RECIPE 12	0.00	0.00	0.00
RECIPE 13	0.00	0.00	0.00
RECIPE 14	0.00	0.00	0.00
RECIPE 15	0.00	0.00	0.00
RECIPE 16	0.00	0.00	0.00
RECIPE 17	0.00	0.00	0.00
RECIPE 18	0.00	0.00	0.00
RECIPE 19	0.00	0.00	0.00
RECIPE 20	0.00	0.00	0.00
RECIPE 21	0.00	0.00	0.00
RECIPE 22	0.00	0.00	0.00
RECIPE 23	0.00	0.00	0.00
RECIPE 24	0.00	0.00	0.00
RECIPE 25	0.00	0.00	0.00
RECIPE 26	0.00	0.00	0.00
RECIPE 27	0.00	0.00	0.00
RECIPE 28	0.00	0.00	0.00
RECIPE 29	0.00	0.00	0.00
RECIPE 30	0.00	0.00	0.00
RECIPE 31	0.00	0.00	0.00
TOTAL			41.97

SOLVENT TOTALS			
FLUSH SOLVENT	WEIGHT PER GALLON	CALCULATED	BY
MEK	46.30	11.50	67.95
MEK	30.09	14.54	64.63
MEK	32.21	16.76	70.97
ALCOHOL	0.00	0.00	0.00
SOLVENT 2	0.00	0.00	0.00
SOLVENT 3	0.00	0.00	0.00
SOLVENT 4	0.00	0.00	0.00
SOLVENT 5	0.00	0.00	0.00
SOLVENT 6	0.00	0.00	0.00
SOLVENT 7	0.00	0.00	0.00
SOLVENT 8	0.00	0.00	0.00
SOLVENT 9	0.00	0.00	0.00
SOLVENT 10	0.00	0.00	0.00
SOLVENT 11	0.00	0.00	0.00
SOLVENT 12	0.00	0.00	0.00
SOLVENT 13	0.00	0.00	0.00
SOLVENT 14	0.00	0.00	0.00
SOLVENT 15	0.00	0.00	0.00
SOLVENT 16	0.00	0.00	0.00
SOLVENT 17	0.00	0.00	0.00
SOLVENT 18	0.00	0.00	0.00
SOLVENT 19	0.00	0.00	0.00
SOLVENT 20	0.00	0.00	0.00
TOTAL VOC			193.15
FLUSH SOLVENT			2866.60

Current Recipe & Flow Status



Log Control

Flow Rates

Alarm Logging

AutoLog Precision Mix I & II

AutoLog is a full-featured data acquisition system used to acquire and store all of the Run total information available with **Precision Mix** system. **AutoLog software** directly prepares the **Precision Mix** data into a spreadsheet importable format. Through this format, computer users can formulate custom reports using full featured word processing, spreadsheet and database programs.

The **AutoLog for Precision Mix II** system offers many improved features over the **Precision Mix I** system. One of the most important features is the ability for network programming and control.

The **AutoLog Precision Mix II** network allows for the direct control of selected recipe and recipe data. Through specific available software, an external computer or programmable controller can select or alter the desired recipe or information within the recipe. This is an important improvement when multiple **Precision Mixes** are installed on automatic equipment.

Computer Requirements

- WINDOWS 95/98/NT/XP/2000 OPERATING SYSTEM
- 8 MEG RAM
- (1) AVAILABLE SERIAL COMMUNICATION PORT PER UNIT BEING MONITORED
- VGA COLOR MONITOR
- KEYBOARD
- MOUSE

This software assumes a working knowledge of the Microsoft Windows operating systems. For detailed questions regarding features of Windows please refer to the Windows manual supplied with your computer.