

AUTOQUIP AUTOMATION

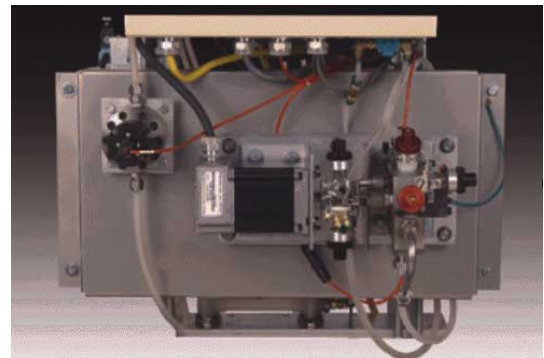
Single Component Gear Pump Flow Control System

Features:

- Accurate flow rate control of high performance class A finishes.
- Each flush fluid manifold with optional integrated solvent air flush and dump valve for quick color change.
- Digital servo stepper motor provides 20-40 millisecond ramp-up speed for no flow to desired flow.
- Outlet pressure transducer provides both safety and useful process information for process verification and trouble shooting.
- Control provides easy interface to robots and machines.
- System can be provided for installations in non hazardous and hazardous (purged) configurations.
- Optional flow meter interface verifies pump performance.
- Multiple pumps can be interfaced to a single control system.



SIMPLE TO USE CONTROL SYSTEM EMPLOYS COLOR TOUCH SCREEN FOR USER INTERFACE



STAINLESS STEEL BACK PANEL WITH DIGITAL STEPPER MOTOR, DUAL PATH FLUSHABLE GEAR PUMP, AND FLUID FLOW METER



email: autoquip@mixcom.com

Autoquip, Inc.
N57 W13430 Reichert Avenue
Menomonee Falls, WI 53051
Phone: (262) 781-6133
Fax: (262) 781-6188

web site: www.aqautomation.com

**AUTOQUIP
AUTOMATION**



AUTOQUIP AUTOMATION

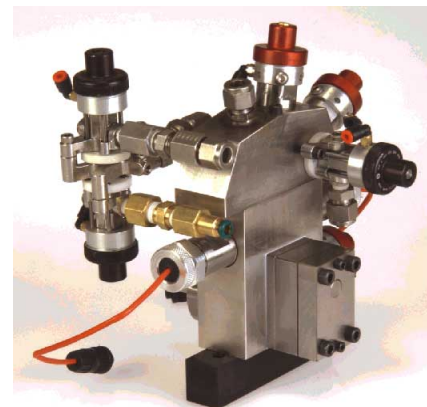
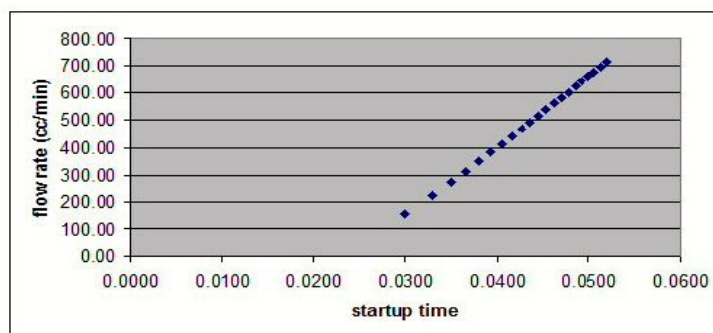
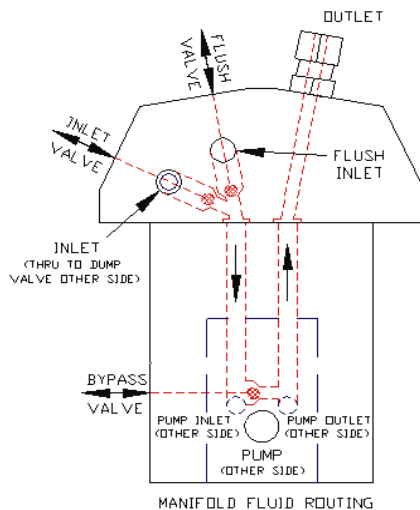
Single Component Gear Pump Flow Control System

Features:

- Integrated output pressure transducer and special micro processor program monitors output pressure to maintain repeatable flow.
- wetted components compatible with even aggressive fluids.
- compact design provides for convenient mounting possibilities.
- constant pump seal lubrication for long life.
- dual path flushing systems are available for fast color change.



COMPACT SYSTEM INTEGRATES EASILY AT BOTH SIDE COLOR CHANGE COMPONENTS



THE AUTOQUIP GEAR PUMP AND MANIFOLD ARE VOID OF POCKETS OR RECESSES THAT TRAP WASTE PAINT

Basic system includes control, stepper motor and drive, flushable gear pump and manifold, inlet and outlet pressure transducers, and inlet shut off valve.